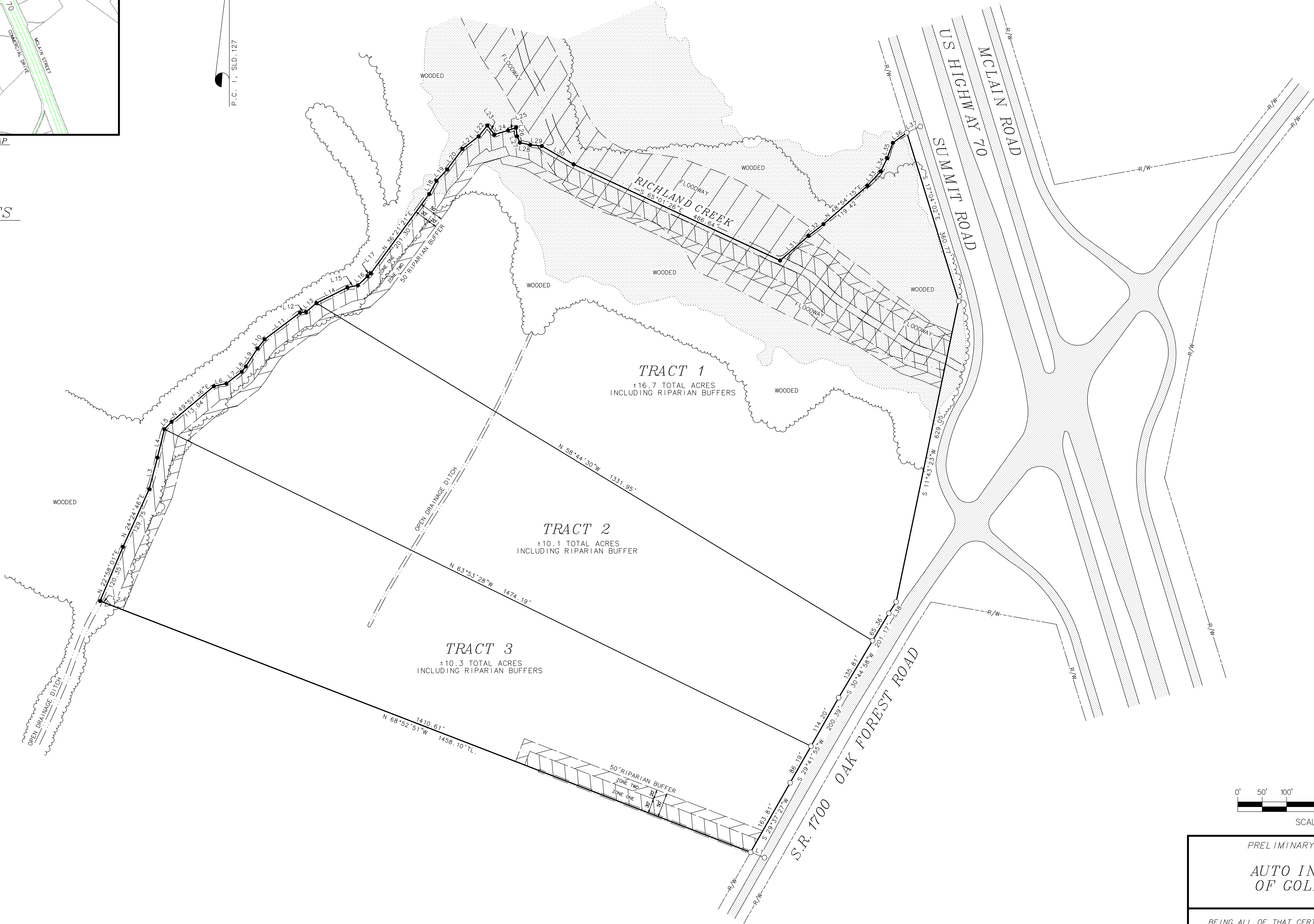


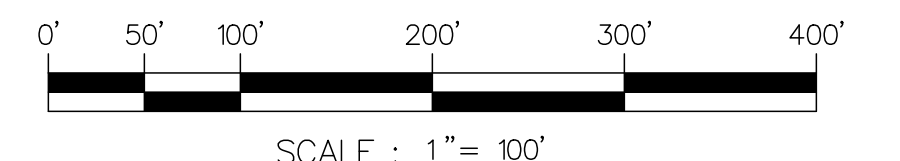
VICINITY MAP
NOT TO SCALE

NORTH
P.C. 1, SLD. 127

TOTAL ACRES
±37.10 ACRES



LINE	BEARING	DISTANCE
L1	N 68°52'51"W	30.34'
L2	N 68°52'51"W	17.15'
L3	N 14°39'44"E	66.89'
L4	N 13°49'23"E	59.65'
L5	N 43°43'49"E	21.17'
L6	N 77°30'51"E	26.36'
L7	N 52°29'27"E	39.63'
L8	N 37°26'03"E	13.65'
L9	N 33°09'08"E	43.95'
L10	N 37°40'52"E	23.68'
L11	N 53°02'16"E	90.48'
L12	N 83°07'51"E	12.40'
L13	N 49°39'05"E	28.10'
L14	N 63°20'01"E	71.13'
L15	N 77°57'27"E	21.79'
L16	N 47°11'15"E	26.97'
L17	N 47°22'00"E	9.27'
L18	N 28°56'29"E	31.00'
L19	N 43°32'38"E	31.97'
L20	N 36°21'21"E	52.36'
L21	N 52°12'04"E	42.12'
L22	N 38°47'39"E	28.33'
L23	S 37°50'54"E	23.40'
L24	N 73°10'26"E	29.43'
L25	N 71°20'05"E	17.20'
L26	S 07°15'49"E	17.70'
L27	S 22°42'26"E	14.21'
L28	S 78°18'09"E	21.98'
L29	S 83°56'44"E	23.58'
L30	S 60°09'19"E	74.97'
L31	N 49°01'21"E	76.89'
L32	N 51°51'29"E	38.99'
L33	N 42°42'27"E	40.30'
L34	N 25°42'54"E	29.91'
L35	N 20°23'30"E	33.40'
L36	N 53°51'28"E	35.54'
L37	N 65°21'32"E	30.20'
L38	S 32°42'23"W	27.51'



PRELIMINARY SKETCH DESIGN FOR
AUTO INVESTMENTS OF GOLDSBORO, LLC

BEING ALL OF THAT CERTAIN TRACT OF LAND AS DESCRIBED IN DEED BOOK 2633, PAGE 111 WAYNE COUNTY REGISTRY

CITY OF GOLDSBORO
NEW HOPE TOWNSHIP WAYNE COUNTY NORTH CAROLINA

BENTON & ASSOCIATES LAND SURVEYING AND MAPPING 119 E WALNUT STREET GOLDSBORO, NC PHONE (919) 735-0440 FAX 735-0840 FIRM LICENSE NO. C-1705	APPROVED RMB DATE 01/19/16
	SURVEYOR DRAFTER RMB
	FILE NUMBER 16-009

PRELIMINARY PLAT
NOT FOR RECORDATION, CONVEYANCE OR SALE